



ATS QLD

SITE VISIT MOUNT COOT-THA QUARRY

Thursday 12 March 2020, Brisbane, Queensland



Supported by



Gold Sponsors



Silver Sponsors



visit ats.org.au

register engineersaustralia.org.au



Join ATS Qld for a site visit to Mount Coot-tha Quarry to see exhibitor demonstrations followed by technical sessions at the Botanical Gardens

Following the success of the Mount Coot-tha Quarry site visit as part of the 2015 ATS Design and Construction Workshop, ATS Queensland invites members to another site visit to the Mt Coot-tha Quarry.

In 2020 the Brisbane City Council and Quarry Manager Robert Bell have again kindly allowed access to the Quarry for the site visit.

As part of the Brisbane Legacy Way Tunnel project, an underground conveyor was used to transport spoil from tunnel excavation underneath the Brisbane Botanic Gardens and through to the Mount Coot-tha Quarry.

The conveyor tunnel was excavated using drill and blast construction methods. The construction of the spoil conveyer enabled spoil removal 24 hours a day, seven days a week in line with tunnel boring machine (TBM) operations. This spoil conveyor eliminated the need for 96,000 truck movements on surrounding roads.

Coffee vans will be available in the quarry (kindly supported by Ausrocks and ATS). Paper bag breakfast options will be available for purchase.

All delegates will be required to wear long pants, closed toe safety boots and a long sleeve shirt. Reasonable fitness and mobility is required as the tour involves walking through a working quarry.

Exhibitor Displays

Remote control demolition (Brokk)
Shotcreting (Jemna)
Fire Bus (Stacey Agnew)
Telebelt Display (Mobile Conveying Services)
Drill and Blast (Orana)
Bluey

Shotcrete supported by:
Holcim (supply)
BASF (additives)
BarChip (fibres)

Exhibitors



JEMNA Pty Ltd



Stacey Agnew





About the Speakers



Bari Thomas

Ground and Underground Engineering Leader – Aurecon

Topic: Geology of the Brisbane Area

Bari is a chartered geologist with over 20 years international geological and geotechnical experience, he specialises in the production of engineering geology and geotechnical models for the civil engineering industry.



Jiwoo Ahn

Geotechnical Engineer – PSM

Topic: Probabilistic Rock Load Determination Using Discrete Fracture Networks for Tunnel Support Design

Jiwoo Ahn is a Brisbane-based Geotechnical Engineer at PSM. Jiwoo has worked on a variety of civil infrastructure projects including a local rail tunnel project, a luxury underground hotel, open cut and underground mining projects.



Craig Wright

Civil Manager – Barchip Australia

Topic: Preparation and Care of Test Specimens at site trials

Craig has worked with Barchip Inc. formerly Elasto Plastic Concrete for nearly 12 years. His involvement in technical sales to the construction industry began over 30 years ago including construction materials manufacturers and suppliers such as Besser, Pioneer, ACI, and Fletchers. This varied career, has provided Craig with a wealth of experiences across a wide range of industries and projects.



Charles Howarth

Managing Director – Herrenknecht (Australia)

Topic: Successful Completion of Major Tunnel Infrastructure Projects in the Southern Hemisphere with XXL Machines

Charles leads Herrenknecht's Australian subsidiary responsible for traffic tunnelling services and mining business in the region. Local Herrenknecht projects include Brisbane's TransApex Projects, Bogong Hydropower, Victorian Desalination, Auckland's Waterview Tunnel, Perth's Forrestfield Airport Link, Sydney Metro City and Southwest, Melbourne Metro, West Gate Tunnel Project, Snowy 2.0, Auckland Interceptor, Auckland City Rail Link and Brisbane Cross River Rail.

Program and Timings

8.30am to 8:45am | Registration and Visitor Induction

9.00am to 12.00pm | Quarry Demonstrations

12:00pm to 1.00pm | Lunch
Botanic Gardens Café

1:00pm to 3.30pm | Technical Sessions
Botanic Gardens Café Conference Room

TICKETS (INCL. GST)

Member	\$40
--------	------

Student Member	\$40
----------------	------

Society member	\$40
----------------	------

Non-member	\$80
------------	------

**UP TO 7 CPD
HOURS
AVAILABLE**

REGISTER NOW



Alan Robertson



Director – Ausrocks

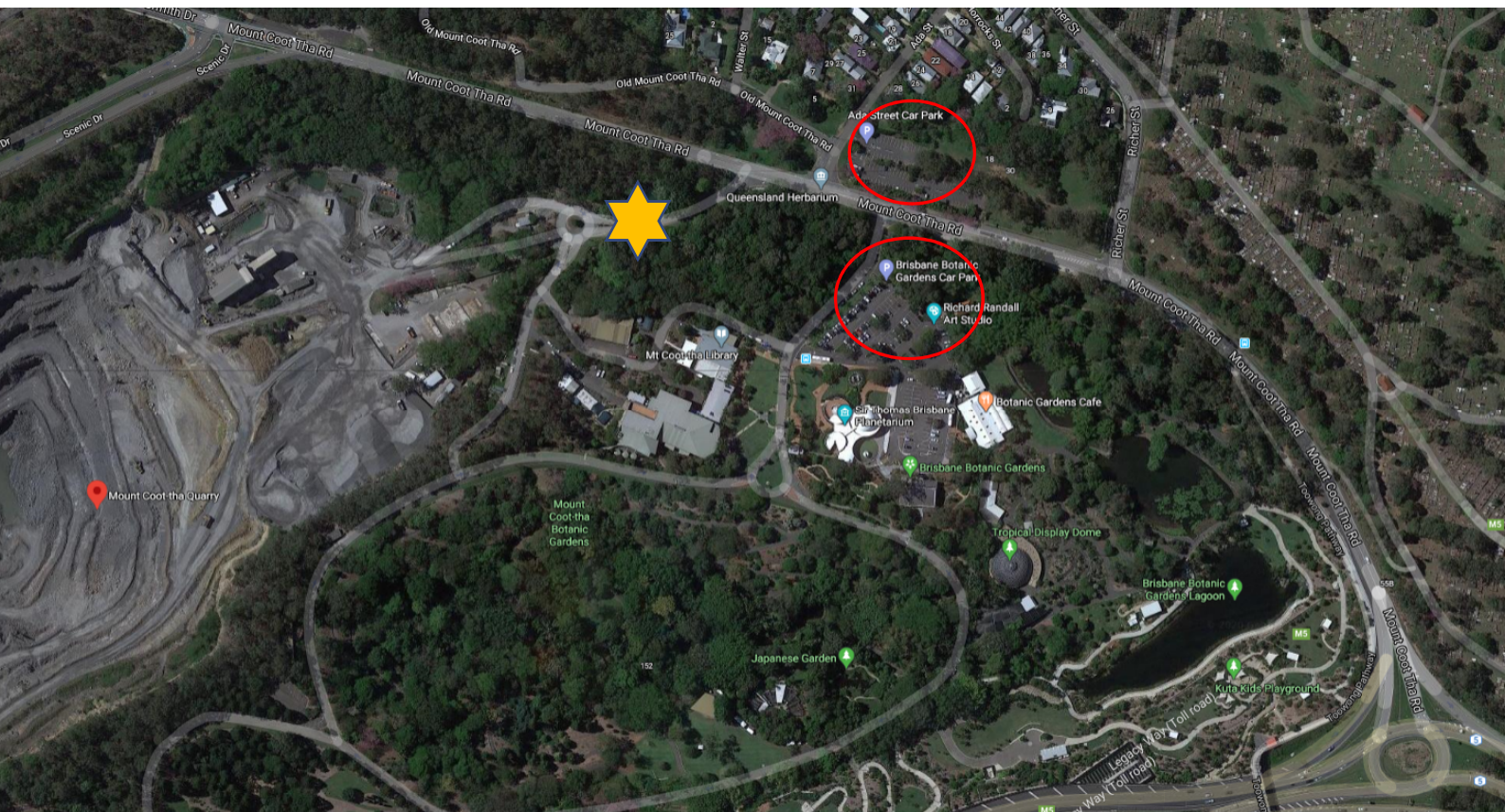
Topic: Quarrying and Tunnelling Project Synergies

Alan has been involved in Mining, Quarrying and Tunnelling projects for the last 40 years and currently owns and operates Caged Rock Pty Ltd. Alan is a past Australian Chairman of the ATS and has a passion for innovation in Tunnelling and Underground Space.



Meeting Point

-  **Meeting Point:** Mt Coot-tha Quarry Access Gate (the next turn after access to Botanical Gardens and Planetarium)
-  **Parking:** No parking at Quarry Access Gate – Parking available at Ada Street Car Park or Botanic Gardens Car Park



Active displays will be carried out by the exhibitors and guides will be provided by Ausrocks Pty Ltd, Consulting Mining Engineers. Logistic support provided by the BCC quarry operators.